

AENC-LSTC-ENG-DWG-0002

Norwich to Tilbury

Volume 2: Plans, Drawings and Sections

Document: 2.16 Trees and Hedgerows to be Removed and or Managed Plans - Section E

Final Issue A

August 2025

Planning Inspectorate Reference: EN020027

Infrastructure Planning (Applications: Prescribed Forms and Procedure) Regulations 2009 Regulation 5(2)(o)

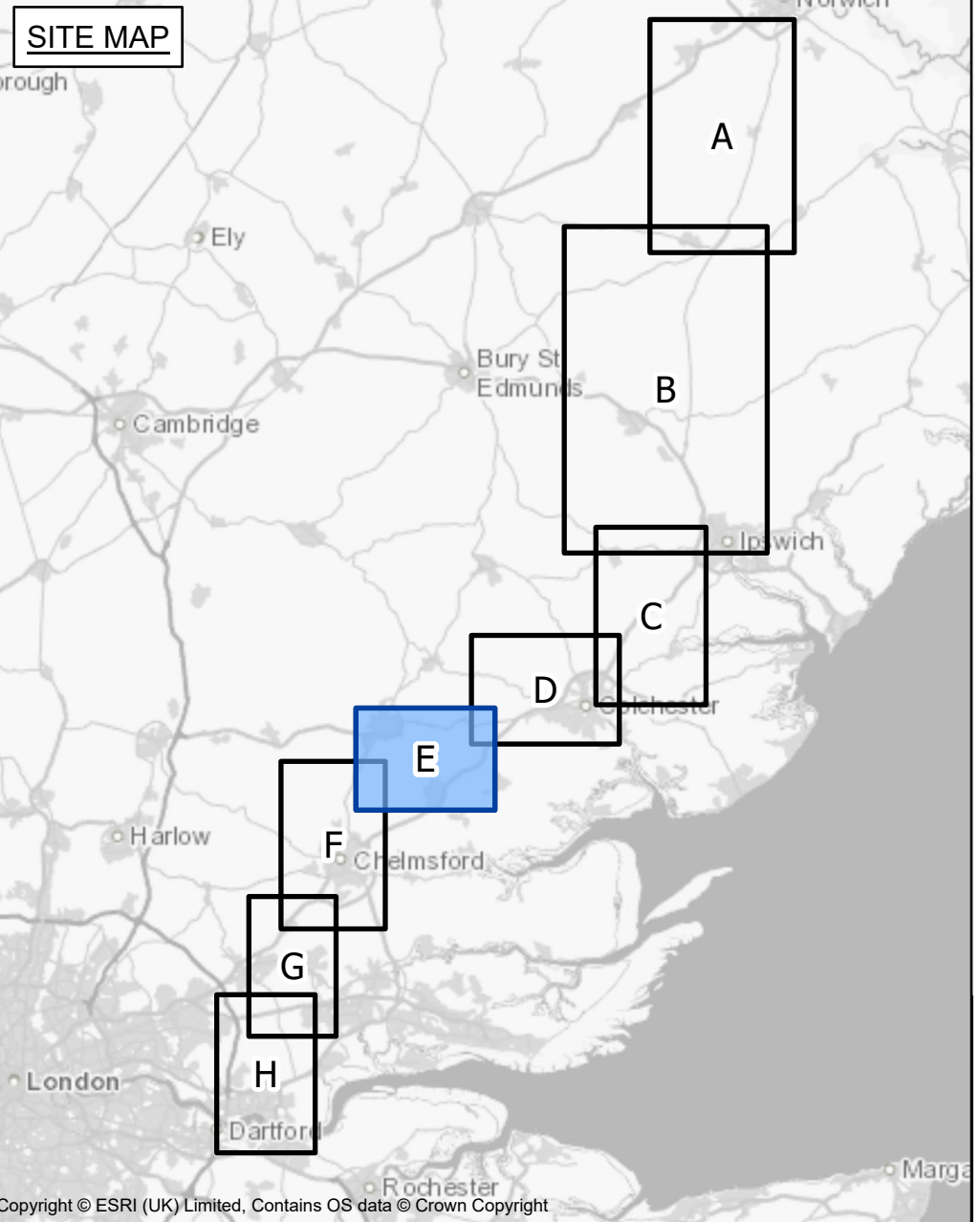
nationalgrid



THE NATIONAL GRID (NORWICH TO TILBURY) ORDER
TREES AND HEDGEROWS TO BE REMOVED AND OR MANAGED PLANS KEY PLAN
REGULATION 5(2)(o)
SECTION E (SHEET 1 OF 1,
BRAINTREE DISTRICT COUNCIL, COLCHESTER CITY COUNCIL AND CHELMSFORD CITY COUNCIL)

Application Document 2.16

SITE MAP



- Legend**
- Local authority boundary
 - Section boundary & local authority boundary
 - Section boundary
 - Sheet index
 - Order Limits

Notes

- These plans are indicative and the Project will sit within the Order Limits. Due to the need for future flexibility, National Grid will be applying for Order Limits and Limits of Deviation within its DCO, within which any final alignment would lie.
- For additional detail on the plan rules, please refer to the Guide to Plans (document reference 2.0), located in the Volume 2 of the DCO application.
- This drawing is scaled at paper size A0, therefore any prints taken at smaller sizes will affect accuracy of the measurement units and should not be scaled against.

Coordinate System: British National Grid

Sheet X Centroid Coordinate: 580335 Sheet Y Centroid Coordinate: 218950



BACKGROUND MAPPING INFORMATION HAS BEEN REPRODUCED FROM THE ORDNANCE SURVEY BY PERMISSION OF ORDNANCE SURVEY OF THE CONTROLLER OF HIS MAJESTY'S STATIONERY OFFICE. © CROWN COPYRIGHT AND DATABASE RIGHTS (2025) LICENCE OS100024241 AND AC0000807948.

A	AUG-2025	For DCO submission	MAB	JPC	KR
Issue	Date	Remarks	Drawn	Checked	Approved

THE NATIONAL GRID
(NORWICH TO TILBURY) ORDER
TREES AND HEDGEROWS TO BE REMOVED
AND OR MANAGED PLANS
REGULATION 5(2)(o)
SECTION E (SHEET 1 OF 1,
BRAINTREE DISTRICT COUNCIL,
COLCHESTER CITY COUNCIL
AND CHELMSFORD CITY COUNCIL)

nationalgrid

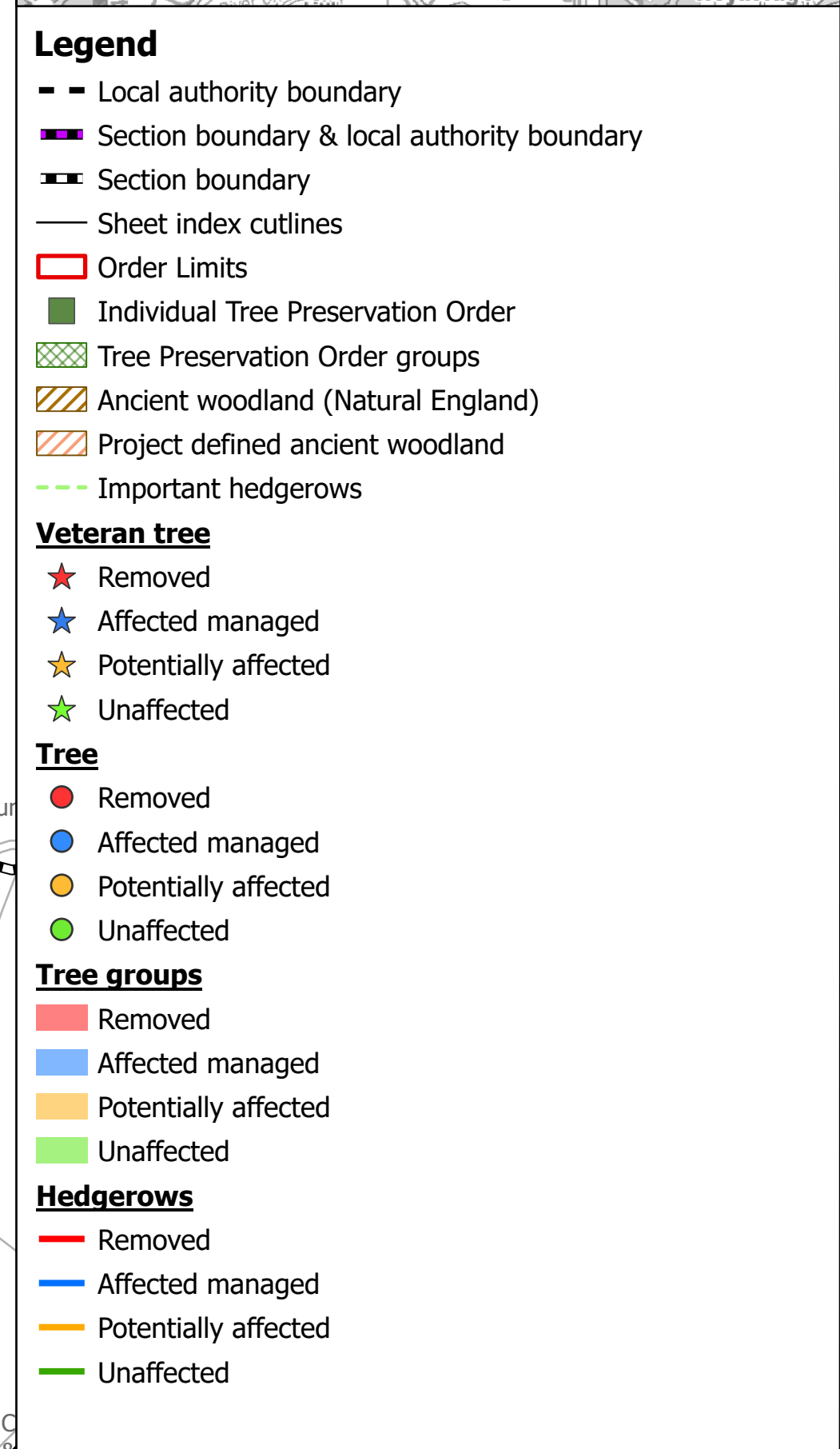
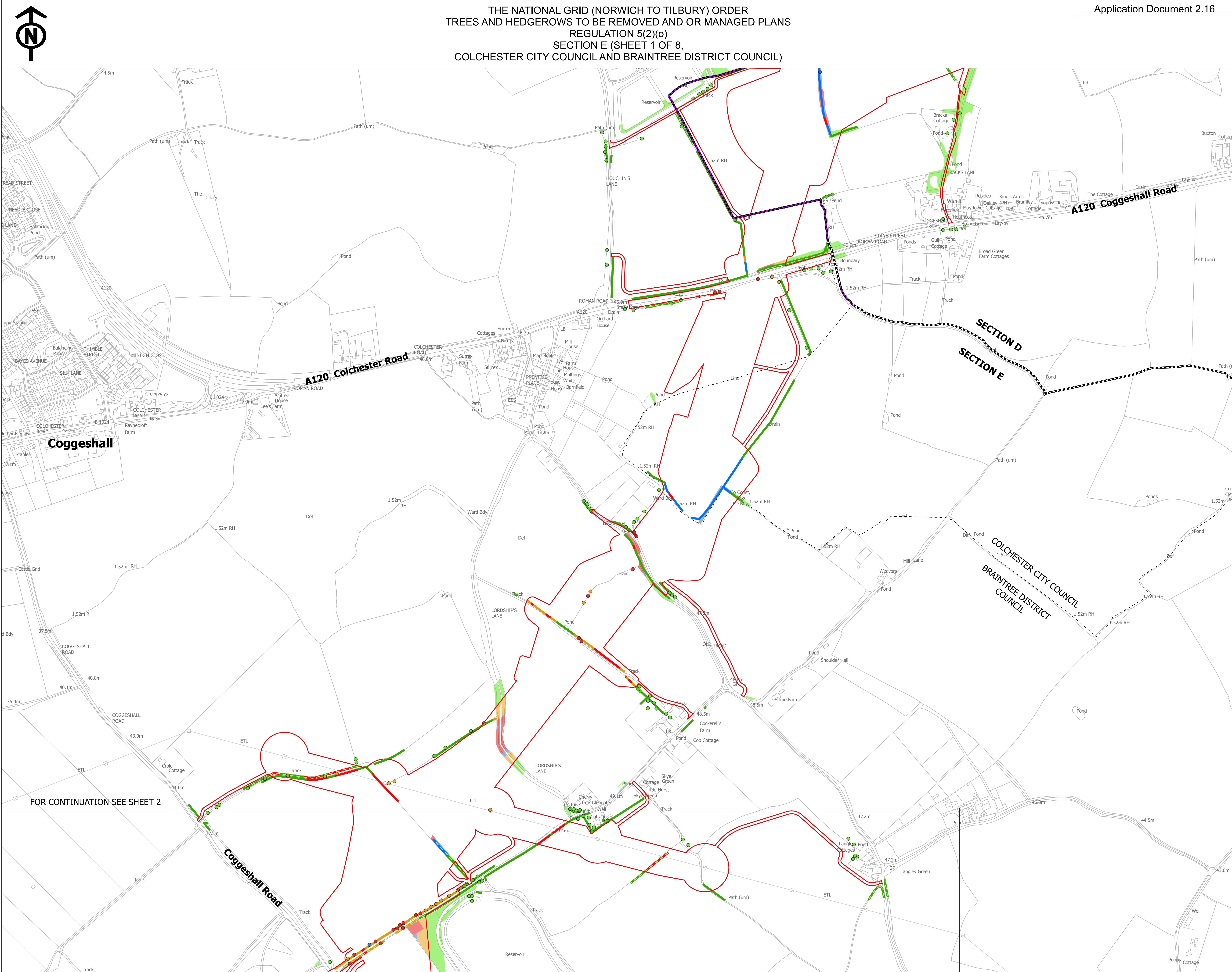
PINS Application Number:

EN020027

National Grid Drawing Reference

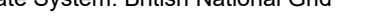
AENC-LSTC-ENG-DWG-0002

Scale	Sheet Size	Sheet	Issue
1:16,000	A0	SHEET 1 OF 1	A



Coordinate System: British National Grid

Sheet X Centroid Coordinate: 587091 Sheet Y Centroid Coordinate: 222537

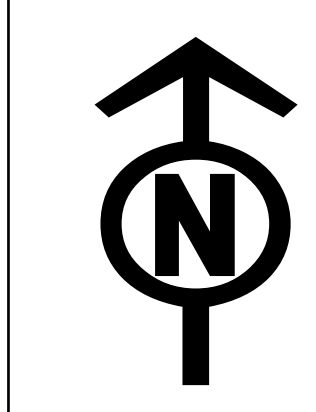


0 50 100 150 200 250
Meters

BACKGROUND MAPPING INFORMATION HAS BEEN REPRODUCED FROM THE ORDNANCE SURVEY BY PERMISSION OF ORDNANCE SURVEY. THE CONTROLLER OF HIS MAJESTY'S STATIONERY OFFICE. © CROWN COPYRIGHT AND DATA RIGHTS (2025) LICENCE OS100024241 AND AC0000807948.

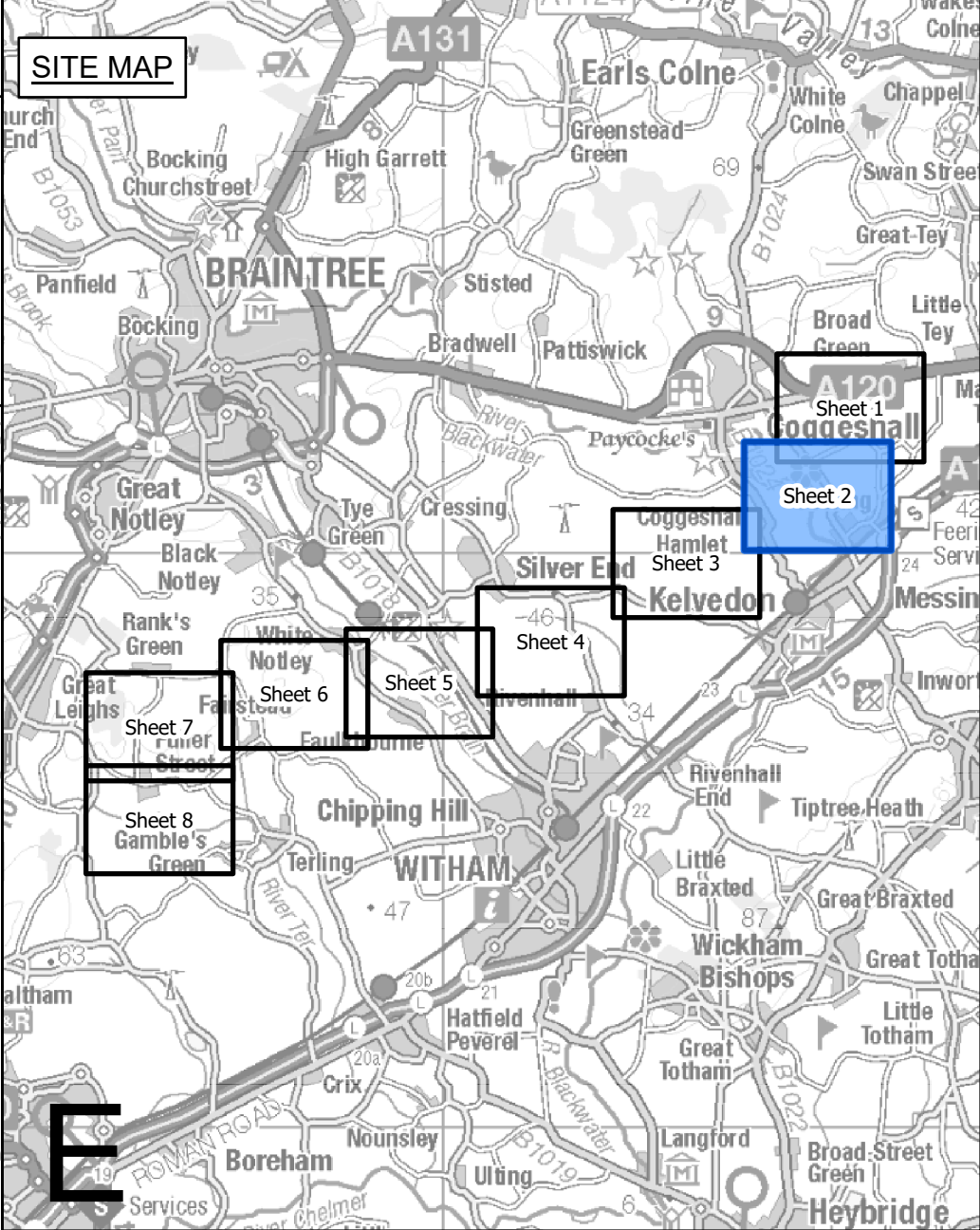
Title

THE NATIONAL GRID
(NORWICH TO TILBURY) ORDER
TREES AND HEDGEROWS TO BE REMOVED
AND OR MANAGED PLANS
REGULATION 5(2)(a)
SECTION E (SHEET 1 OF 8,
COLCHESTER CITY COUNCIL
AND BRAINTREE DISTRICT COUNCIL)



THE NATIONAL GRID (NORWICH TO TILBURY) ORDER
TREES AND HEDGEROWS TO BE REMOVED AND OR MANAGED PLANS
REGULATION 5(2)(o)
SECTION E (SHEET 2 OF 8,
BRAINTREE DISTRICT COUNCIL)

Application Document 2.16



- Legend**
- Local authority boundary
 - Section boundary & local authority boundary
 - Section boundary
 - Sheet index cutlines
 - Order Limits
 - Individual Tree Preservation Order
 - Tree Preservation Order groups
 - Ancient woodland (Natural England)
 - Project defined ancient woodland
 - Important hedgerows
- Veteran tree**
- Removed
 - Affected managed
 - Potentially affected
 - Unaffected
- Tree**
- Removed
 - Affected managed
 - Potentially affected
 - Unaffected
- Tree groups**
- Removed
 - Affected managed
 - Potentially affected
 - Unaffected
- Hedgerows**
- Removed
 - Affected managed
 - Potentially affected
 - Unaffected

- Notes**
- These plans are indicative and the Project will sit within the Order Limits. Due to the need for future flexibility, National Grid will be applying for Order Limits and Limits of Deviation within its DCO, within which any final alignment would lie.
 - For additional detail on the plan suites, please refer to the Guide to Plans (document reference 2.0), located in the Volume 2 of the DCO application.
 - This drawing is scaled at paper size A0, therefore any prints taken at smaller sizes will affect accuracy of the measurement units and should not be scaled against.
 - Spatial locations and details of Tree Preservation Orders have been provided by relevant Local Planning Authorities and their projected spatial locations may differ slightly to those recorded during the arboricultural survey undertaken by the Project. For the avoidance of doubt, references to any tree subject to a Tree Preservation Order on these plans include any such slight differences.
 - The Tree Preservation Order data illustrated on the plans is limited to the arboriculture study area (which applies a 30 m buffer from the outer edge of the Order Limits).
 - Reference to any tree, shrub, shrubby, hedgerow, or important hedgerow being removed, affected managed, potentially affected or unaffected is without prejudice to the exercise of any power in relation to such tree, shrub, shrubby, hedgerow, or important hedgerow on the terms of the DCO.
 - The numbered references to trees comprised in any Individual Tree Preservation Order shown on these plans include any tree to which the relevant line points as well as any tree overlapping any such tree, whether or not a line points to it or not.
 - For the avoidance of doubt, where the section boundary & local authority boundary and/or Order Limits shown on these plans overlap any tree, hedgerow or ancient woodland shown on these plans such that they are partially obscured these plans are to be interpreted as if the tree, hedgerow or ancient woodland in question is not so obscured.

Coordinate System: British National Grid
Sheet X Centroid Coordinate: 586519 Sheet Y Centroid Coordinate: 221000

0 50 100 150 200 250 Meters

BACKGROUND MAPPING INFORMATION HAS BEEN REPRODUCED FROM THE ORDNANCE SURVEY BY PERMISSION OF ORDNANCE SURVEY OF THE CONTROLLER OF HIS MAJESTY'S STATIONERY OFFICE. © CROWN COPYRIGHT AND DATABASE RIGHTS (2025) LICENCE OS100024241 AND AC0000807948.

A	AUG-2025	For DCO submission	MAB	JPC	KR
Issue	Date	Remarks	Drawn	Checked	Approved

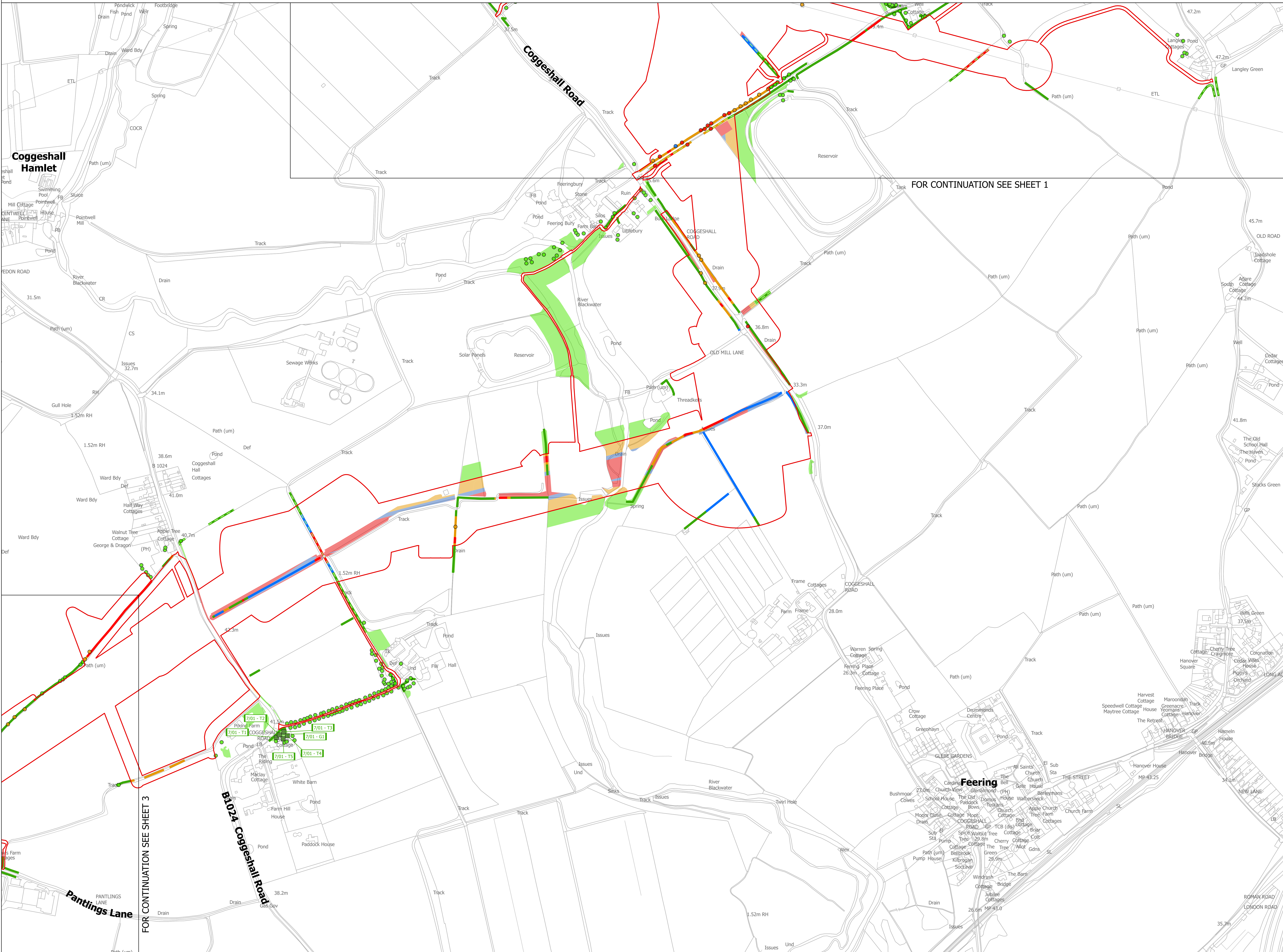
THE NATIONAL GRID
(NORWICH TO TILBURY) ORDER
TREES AND HEDGEROWS TO BE REMOVED
AND OR MANAGED PLANS
REGULATION 5(2)(o)
SECTION E (SHEET 2 OF 8,
BRAINTREE DISTRICT COUNCIL)

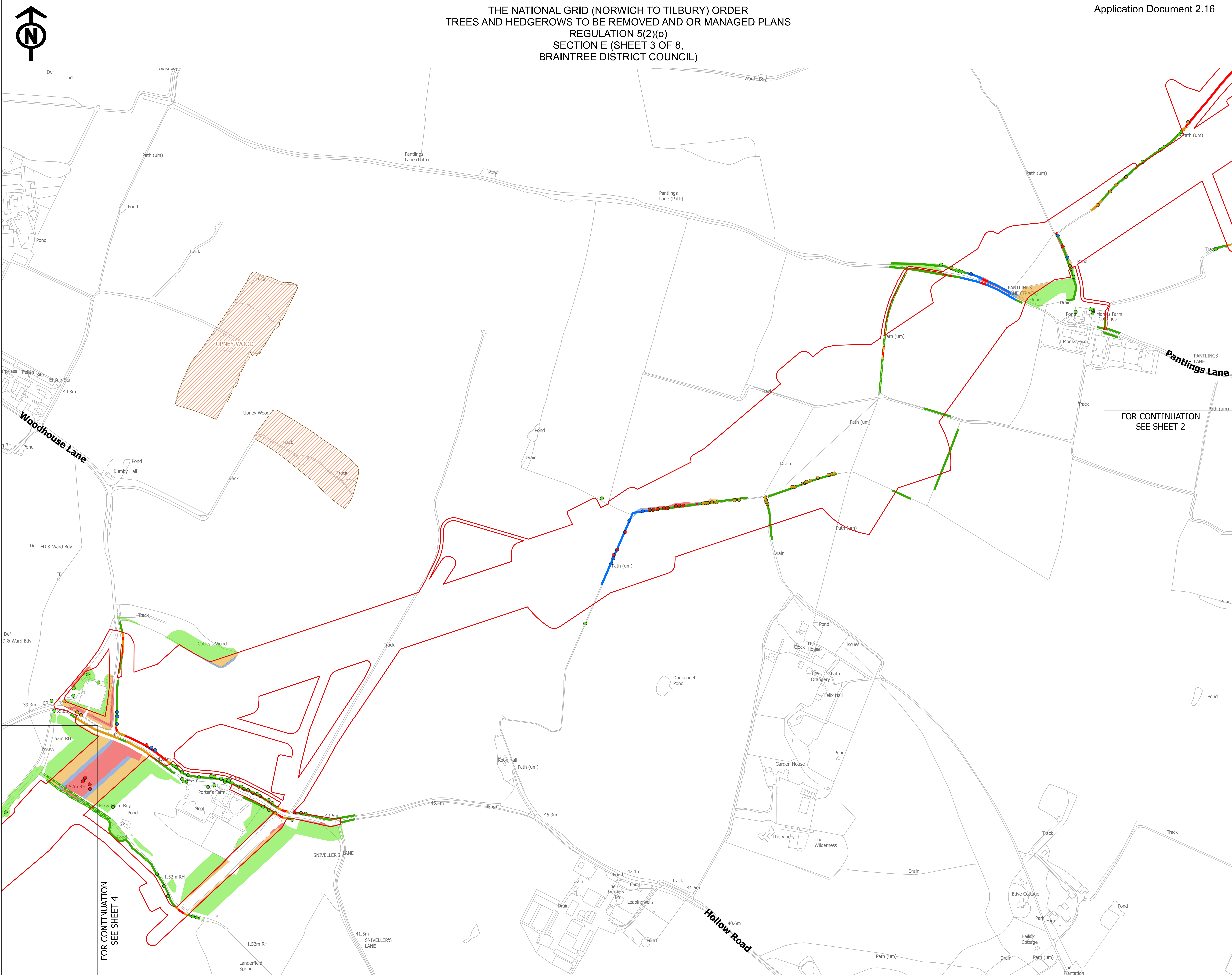
nationalgrid

PINS Application Number EN020027

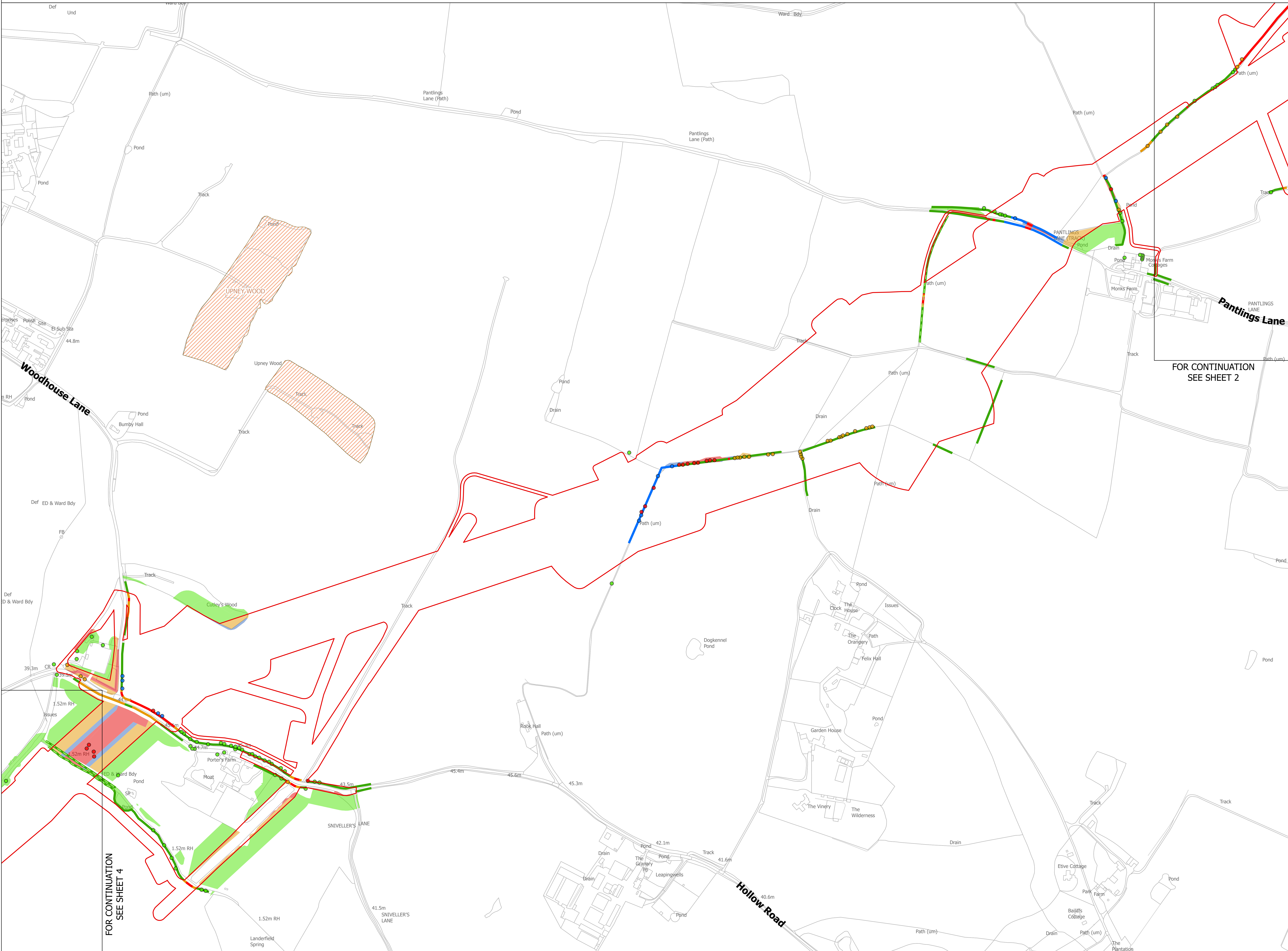
National Grid Drawing Reference AENC-LSTC-ENG-DWG-0002

Scale	Sheet Size	Sheet	Issue
1:2,500	A0	SHEET 2 OF 8	A





THE NATIONAL GRID (NORWICH TO TILBURY) ORDER
TREES AND HEDGEROWS TO BE REMOVED AND OR MANAGED PLANS
REGULATION 5(2)(o)
SECTION E (SHEET 3 OF 8,
BRAINTREE DISTRICT COUNCIL)



SITE MAP

E

Legend

- Local authority boundary
- Section boundary & local authority boundary
- Section boundary
- Sheet index cutlines
- Order Limits
- Individual Tree Preservation Order
- Tree Preservation Order groups
- Ancient woodland (Natural England)
- Project defined ancient woodland
- Important hedgerows

Veteran tree

- Removed
- Affected managed
- Potentially affected
- Unaffected

Tree

- Removed
- Affected managed
- Potentially affected
- Unaffected

Tree groups

- Removed
- Affected managed
- Potentially affected
- Unaffected

Hedgerows

- Removed
- Affected managed
- Potentially affected
- Unaffected

Notes

- These plans are indicative and the Project will sit within the Order Limits. Due to the need for future flexibility, National Grid will be applying for Order Limits and Limits of Deviation within its DCO, within which any final alignment would lie.
- For additional detail on the plan suites, please refer to the Guide to Plans (document reference 2.0), located in the Volume 2 of the DCO application.
- This drawing is scaled at paper size A0, therefore any prints taken at smaller sizes will affect accuracy of the measurement units and should not be scaled against.
- Spatial locations and details of Tree Preservation Orders have been provided by relevant Local Planning Authorities and their projected spatial locations may differ slightly to those recorded during the arboricultural survey undertaken by the Project. For the avoidance of doubt, references to any tree subject to a Tree Preservation Order on these plans include any such slight differences.
- The Tree Preservation Order data illustrated on the plans is limited to the arboriculture study area (which applies a 30 m buffer from the outer edge of the Order Limits).
- Reference to any tree, shrub, shrubbery, hedgerow, or important hedgerow being removed, affected managed, potentially affected or unaffected is without prejudice to the exercise of any power in relation to such tree, shrub, shrubbery, hedgerow, or important hedgerow on the terms of the DCO.
- The numbered references to trees comprised in any Individual Tree Preservation Order shown on these plans include any tree to which the relevant line points as well as any tree overlapping any such tree, whether or not a line points to it or not.
- For the avoidance of doubt, where the section boundary & local authority boundary and/or Order Limits shown on these plans overlap any tree, hedgerow or ancient woodland shown on these plans such that they are partially obscured these plans are to be interpreted as if the tree, hedgerow or ancient woodland in question is not so obscured.

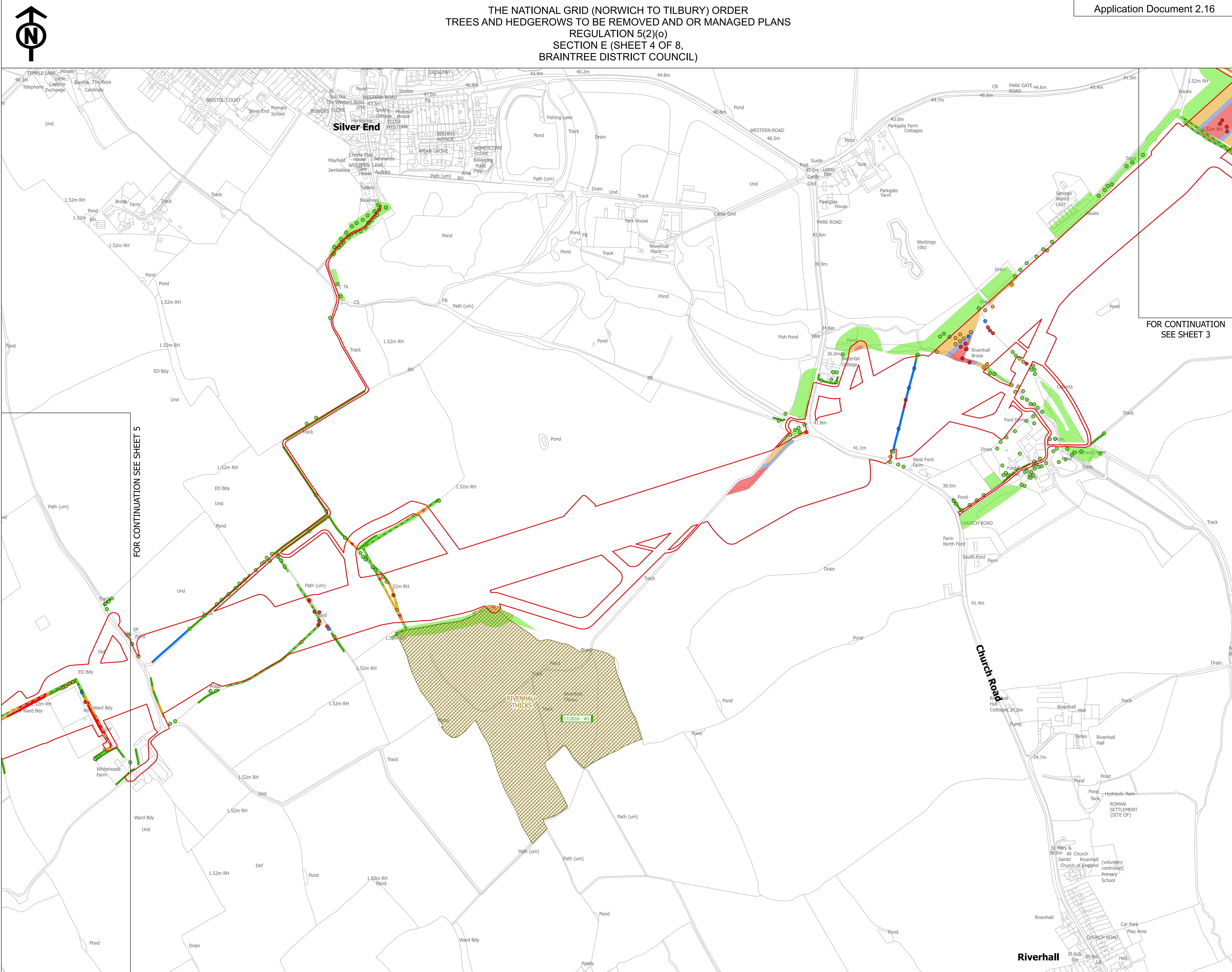
Coordinate System: British National Grid
Sheet X Centroid Coordinate: 584231 Sheet Y Centroid Coordinate: 219628

0 50 100 150 200 250 Meters

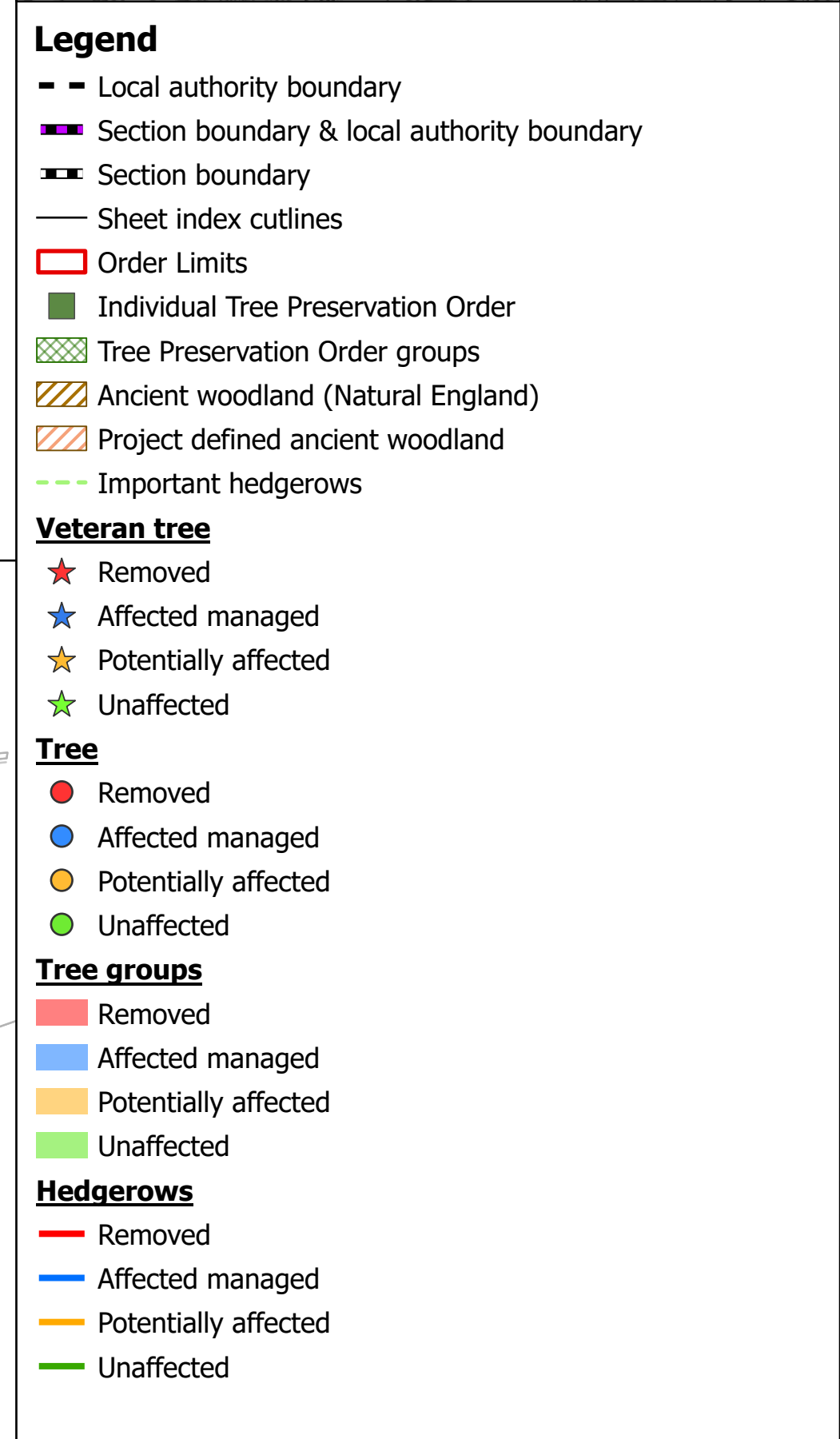
BACKGROUND MAPPING INFORMATION HAS BEEN REPRODUCED FROM THE ORDNANCE SURVEY BY PERMISSION OF ORDNANCE SURVEY OF THE CONTROLLER OF HIS MAJESTY'S STATIONERY OFFICE. © CROWN COPYRIGHT AND DATABASE RIGHTS (2025) LICENCE OS100024241 AND AC0000807948.

A	AUG-2025	For DCO submission	MAB	JPC	KR
Issue	Date	Remarks	Drawn	Checked	Approved
Title					
THE NATIONAL GRID (NORWICH TO TILBURY) ORDER TREES AND HEDGEROWS TO BE REMOVED AND OR MANAGED PLANS REGULATION 5(2)(o) SECTION E (SHEET 3 OF 8, BRAINTREE DISTRICT COUNCIL)					
nationalgrid					
PINS Application Number		EN020027			
National Grid Drawing Reference					
AENC-LSTC-ENG-DWG-0002					
Scale	Sheet Size	Sheet	Issue		
1:2,500	A0	SHEET 3 OF 8	A		

COPYRIGHT: NOT TO BE REPRODUCED WITHOUT THE WRITTEN PERMISSION OF NATIONAL GRID ELECTRICITY TRANSMISSION PLC




Application Document 2.16

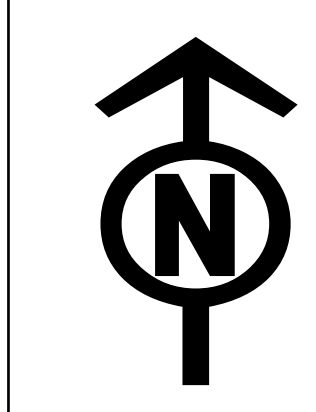


Coordinate System: British National Grid
Sheet X Centroid Coordinate: 581870 Sheet Y Centroid Coordinate: 218461

0 50 100 150 200 250 Meters

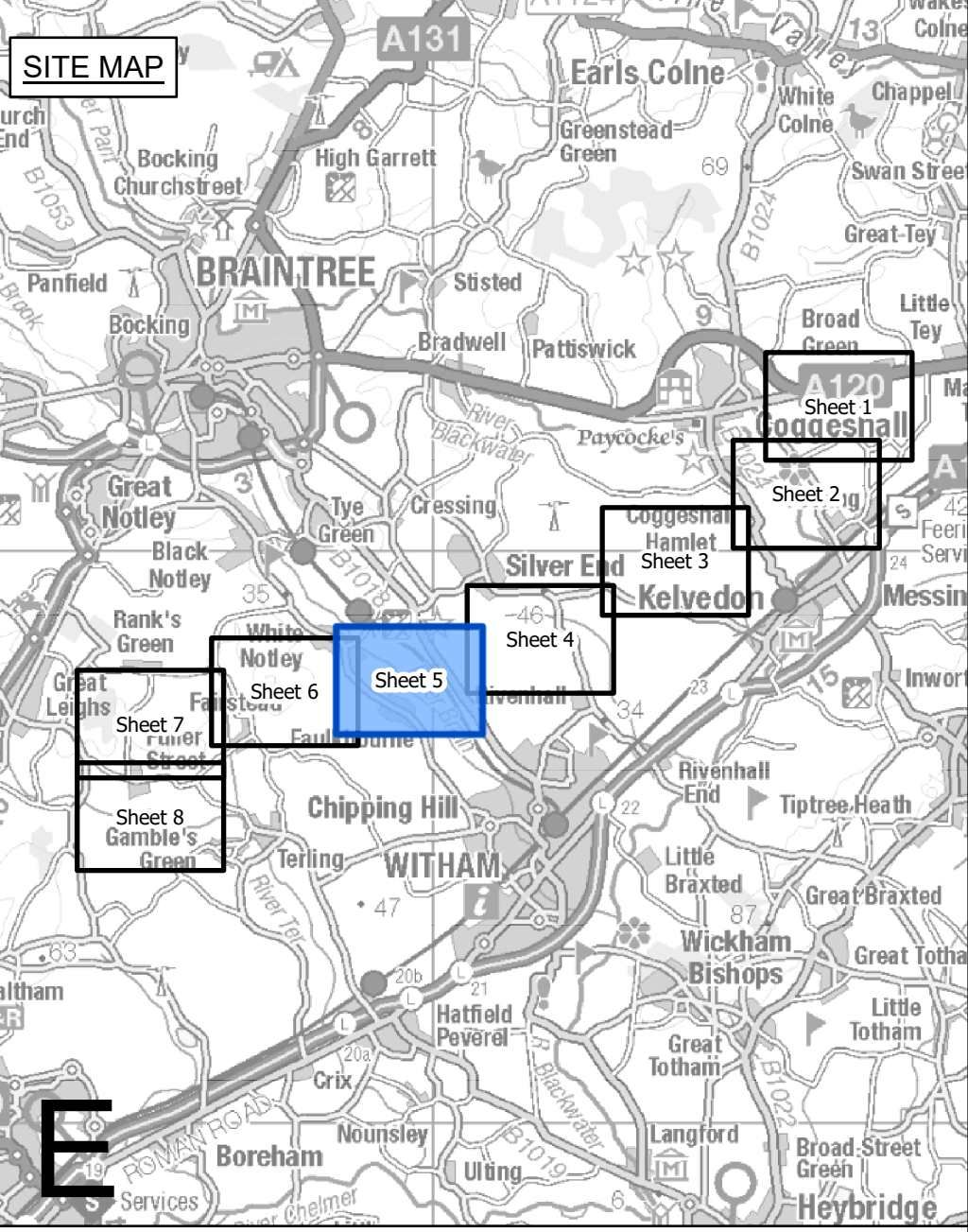
A	AUG-2025	For DCO submission	MAB	JPC	KR
Issue	Date	Remarks	Drawn	Checked	Approved

			
<u>PINS Application Number</u>		EN020027	
<u>National Grid Drawing Reference</u>			
AENC-LSTC-ENG-DWG-0002			
<u>Scale</u> 1:2,500	<u>Sheet Size</u> A0	<u>Sheet</u> SHEET 4 OF 8	<u>Issue</u> A



THE NATIONAL GRID (NORWICH TO TILBURY) ORDER
TREES AND HEDGEROWS TO BE REMOVED AND OR MANAGED PLANS
REGULATION 5(2)(o)
SECTION E (SHEET 5 OF 8,
BRAINTREE DISTRICT COUNCIL)

Application Document 2.16



Legend

- Local authority boundary
- Section boundary & local authority boundary
- Section boundary
- Sheet index cutlines
- Order Limits
- Individual Tree Preservation Order
- Tree Preservation Order groups
- Ancient woodland (Natural England)
- Project defined ancient woodland
- Important hedgerows

Veteran tree

- Removed
- Affected managed
- Potentially affected
- Unaffected

Tree

- Removed
- Affected managed
- Potentially affected
- Unaffected

Tree groups

- Removed
- Affected managed
- Potentially affected
- Unaffected

Hedgerows

- Removed
- Affected managed
- Potentially affected
- Unaffected

Notes

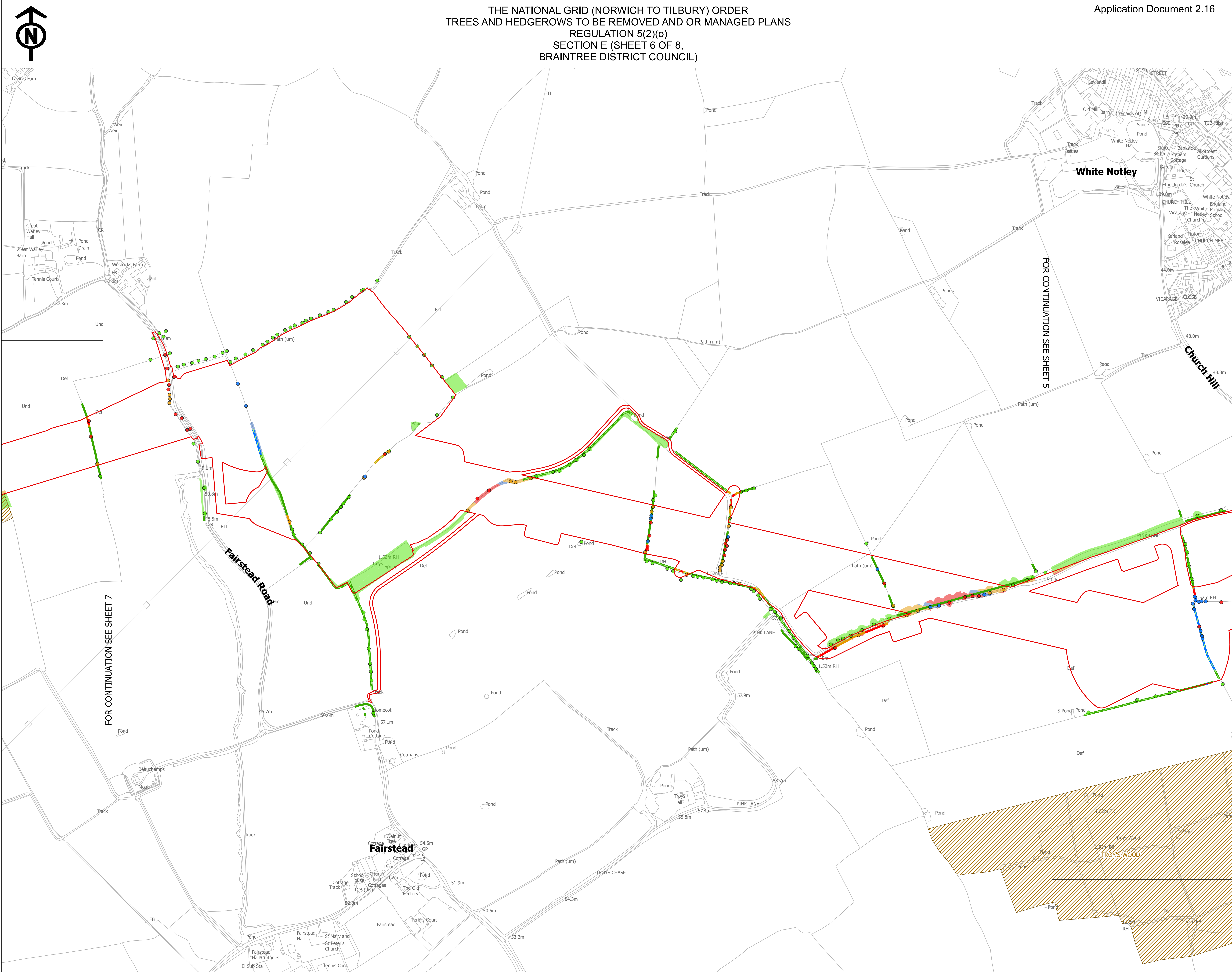
- These plans are indicative and the Project will sit within the Order Limits. Due to the need for future flexibility, National Grid will be applying for Order Limits and Limits of Deviation within its DCO, within which any final alignment would lie.
- For additional detail on the plan suites, please refer to the Guide to Plans (document reference 2.0), located in the Volume 2 of the DCO application.
- This drawing is scaled at paper size A0, therefore any prints taken at smaller sizes will affect accuracy of the measurement units and should not be scaled against.
- Spatial locations and details of Tree Preservation Orders have been provided by relevant Local Planning Authorities and their projected spatial locations may differ slightly to those recorded during the arboricultural survey undertaken by the Project. For the avoidance of doubt, references to any tree subject to a Tree Preservation Order on these plans include any such slight differences.
- The Tree Preservation Order data illustrated on the plans is limited to the arboriculture study area (which applies a 30 m buffer from the outer edge of the Order Limits).
- Reference to any tree, shrub, shrubbery, hedgerow, or important hedgerow being removed, affected managed, potentially affected or unaffected is without prejudice to the exercise of any power in relation to such tree, shrub, shrubbery, hedgerow, or important hedgerow on the terms of the DCO.
- The numbered references to trees comprised in any Individual Tree Preservation Order shown on these plans include any tree to which the relevant line points as well as any tree overlapping any such tree, whether or not a line points to it or not.
- For the avoidance of doubt, where the section boundary & local authority boundary and/or Order Limits shown on these plans overlap any tree, hedgerow or ancient woodland shown on these plans such that they are partially obscured these plans are to be interpreted as if the tree, hedgerow or ancient woodland in question is not so obscured.

Coordinate System: British National Grid
Sheet X Centroid Coordinate: 579578 Sheet Y Centroid Coordinate: 217745

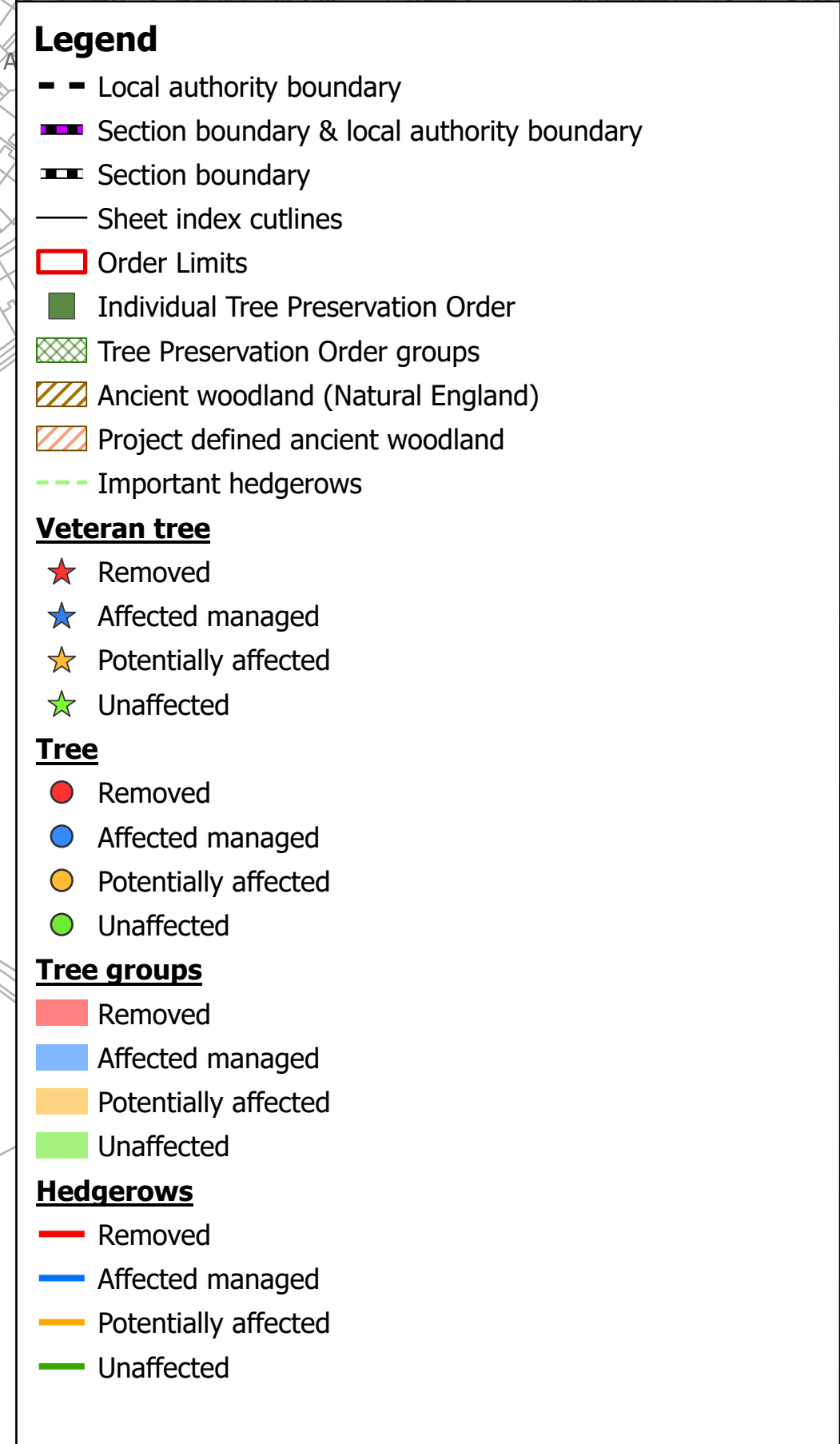
0 50 100 150 200 250 Meters

BACKGROUND MAPPING INFORMATION HAS BEEN REPRODUCED FROM THE ORDNANCE SURVEY BY PERMISSION OF ORDNANCE SURVEY OF THE CONTROLLER OF HIS MAJESTY'S STATIONERY OFFICE. © CROWN COPYRIGHT AND DATABASE RIGHTS (2025) LICENCE OS100024241 AND AC0000807948.


A	AUG-2025	For DCO submission	MAB	JPC	KR
Issue	Date	Remarks	Drawn	Checked	Approved
<u>Title</u>					
THE NATIONAL GRID (NORWICH TO TILBURY) ORDER TREES AND HEDGEROWS TO BE REMOVED AND OR MANAGED PLANS REGULATION 5(2)(o) SECTION E (SHEET 5 OF 8, BRAINTREE DISTRICT COUNCIL)					
nationalgrid					
<u>PINS Application Number</u>		EN020027			
<u>National Grid Drawing Reference</u>					
AENC-LSTC-ENG-DWG-0002					
<u>Scale</u>	<u>Sheet Size</u>	<u>Sheet</u>	<u>Issue</u>		
1:2,500	A0	SHEET 5 OF 8	A		



Application Document 2.16



Coordinate System: British National Grid
Sheet X Centroid Coordinate: 577398 Sheet Y Centroid Coordinate: 217546



A horizontal scale bar with alternating black and white segments. Above the bar are numerical markers at 0, 50, 100, 150, 200, and 250. The word "Meters" is positioned at the right end of the bar.

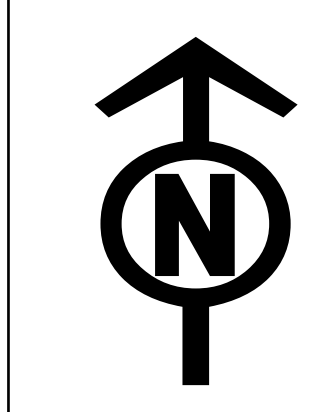
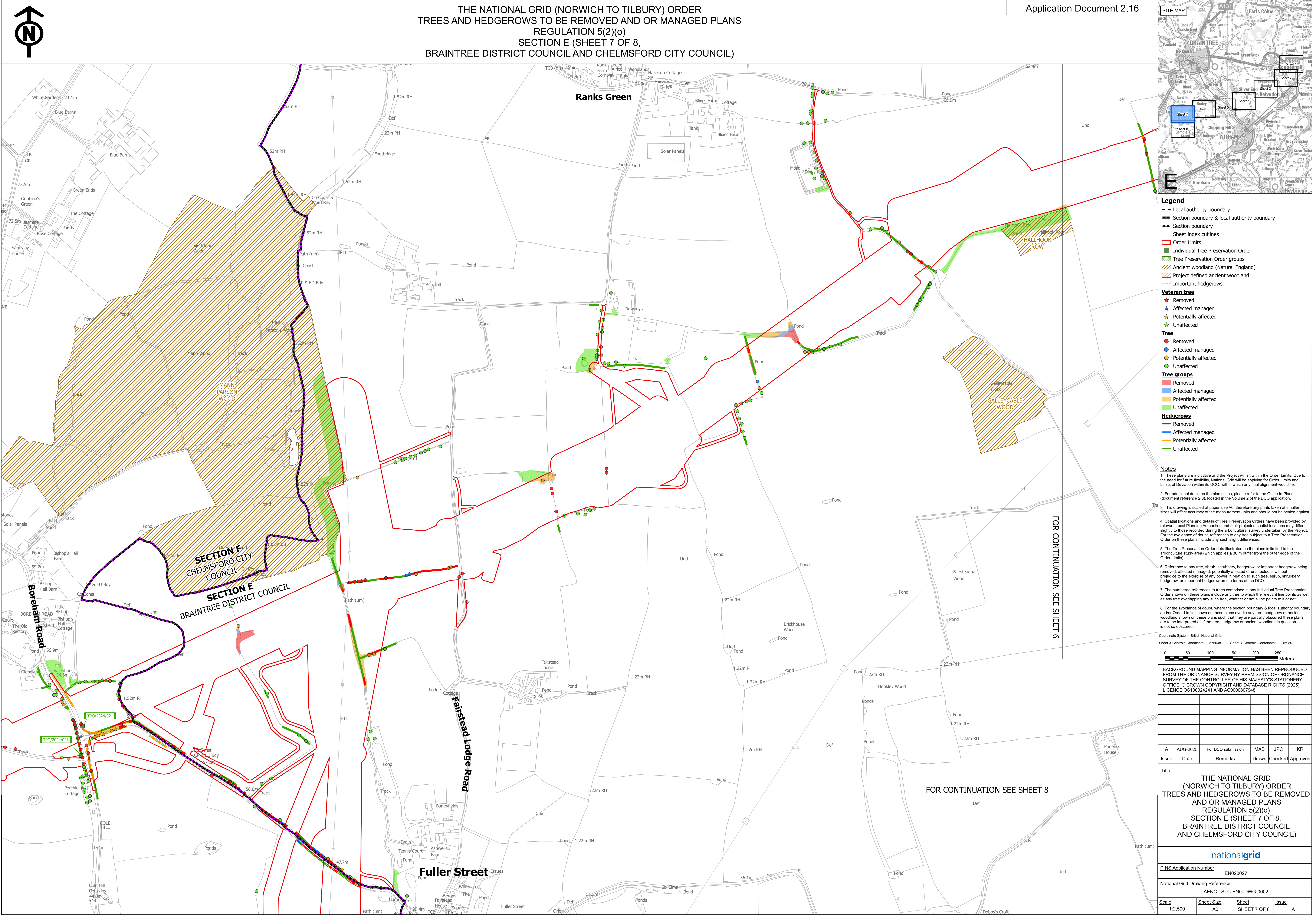
Title

THE NATIONAL GRID
(NORWICH TO TILBURY) ORDER
TREES AND HEDGEROWS TO BE REMOVED
AND OR MANAGED PLANS
REGULATION 5(2)(a)
SECTION E (SHEET 6 OF 8,
BRAINTREE DISTRICT COUNCIL)

<u>PINS Application Number</u>	EN020027
--------------------------------	----------

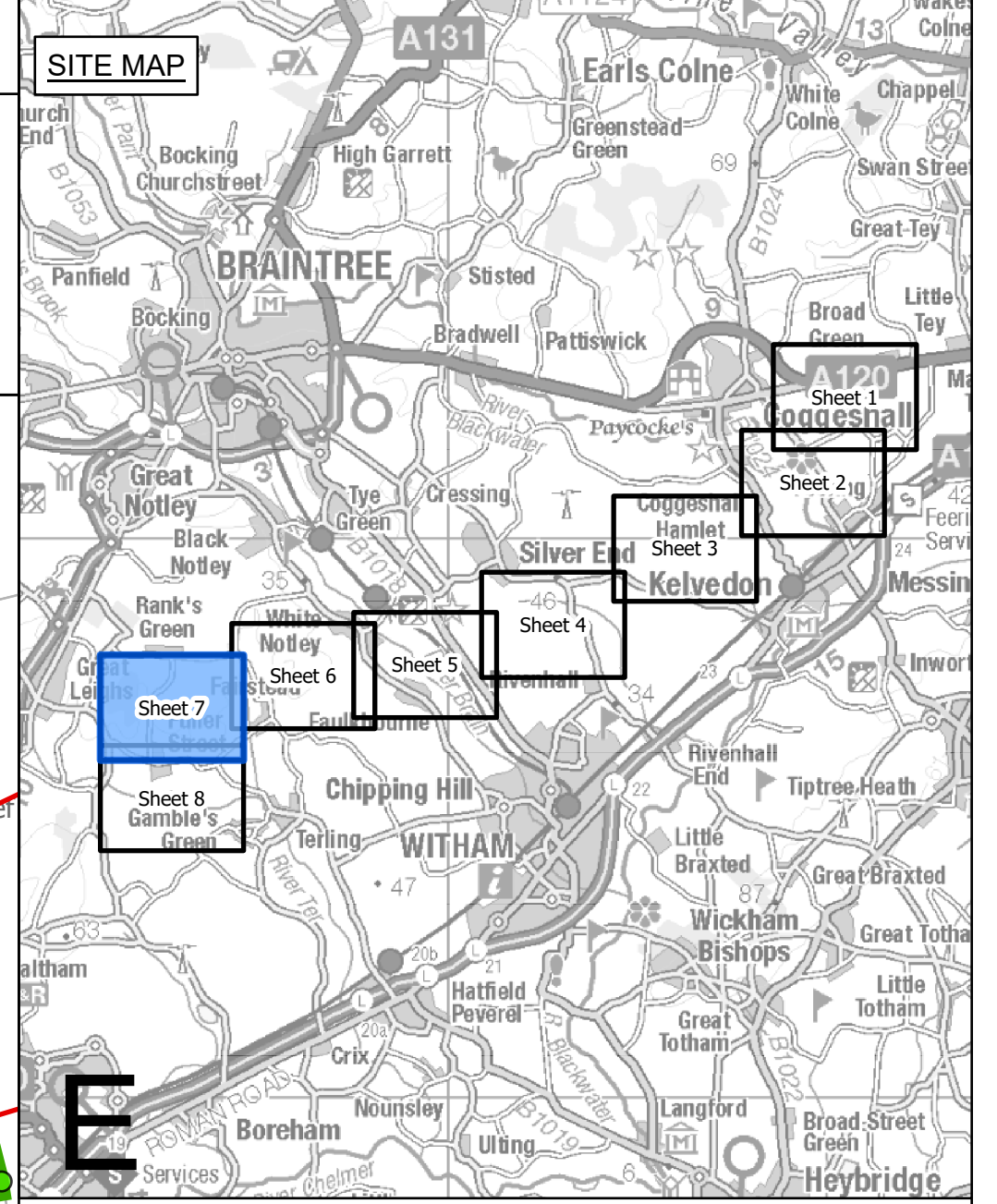
National Grid Drawing Reference

AENC-ESTC-ENG-DWG-0002			
<u>Scale</u> 1:2,500	<u>Sheet Size</u> A0	<u>Sheet</u> SHEET 6 OF 8	<u>Issue</u> A



THE NATIONAL GRID (NORWICH TO TILBURY) ORDER
TREES AND HEDGEROWS TO BE REMOVED AND OR MANAGED PLANS
REGULATION 5(2)(o)
SECTION E (SHEET 7 OF 8,
BRAINTREE DISTRICT COUNCIL AND CHELMSFORD CITY COUNCIL)

Application Document 2.16



Legend

- Local authority boundary
- Section boundary & local authority boundary
- Section boundary
- Sheet index cutlines
- Order Limits
- Individual Tree Preservation Order
- Tree Preservation Order groups
- Ancient woodland (Natural England)
- Project defined ancient woodland
- Important hedgerows

Veteran tree

- Removed
- Affected managed
- Potentially affected
- Unaffected

Tree

- Removed
- Affected managed
- Potentially affected
- Unaffected

Tree groups

- Removed
- Affected managed
- Potentially affected
- Unaffected

Hedgerows

- Removed
- Affected managed
- Potentially affected
- Unaffected

Notes

- These plans are indicative and the Project will sit within the Order Limits. Due to the need for future flexibility, National Grid will be applying for Order Limits and Limits of Deviation within its DCO, within which any final alignment would lie.
- For additional detail on the plan suites, please refer to the Guide to Plans (document reference 2.0), located in the Volume 2 of the DCO application.
- This drawing is scaled at paper size A0, therefore any prints taken at smaller sizes will affect accuracy of the measurement units and should not be scaled against.
- Spatial locations and details of Tree Preservation Orders have been provided by relevant Local Planning Authorities and their projected spatial locations may differ slightly to those recorded during the arboreal survey undertaken by the Project. For the avoidance of doubt, references to any tree subject to a Tree Preservation Order on these plans include any such slight differences.
- The Tree Preservation Order data illustrated on the plans is limited to the arboriculture study area (which applies a 30 m buffer from the outer edge of the Order Limits).
- Reference to any tree, shrub, shrubby, hedgerow, or important hedgerow being removed, affected managed, potentially affected or unaffected is without prejudice to the exercise of any power in relation to such tree, shrub, shrubby, hedgerow, or important hedgerow on the terms of the DCO.
- The numbered references to trees comprised in any Individual Tree Preservation Order shown on these plans include any tree to which the relevant line points as well as any tree overlapping any such tree, whether or not a line points to it or not.
- For the avoidance of doubt, where the section boundary & local authority boundary and/or Order Limits shown on these plans overlap any tree, hedgerow or ancient woodland shown on these plans such that they are partially obscured these plans are to be interpreted as if the tree, hedgerow or ancient woodland in question is not so obscured.

Coordinate System: British National Grid
Sheet X Centroid Coordinate: 575048 Sheet Y Centroid Coordinate: 216980

0 50 100 150 200 250 Meters

BACKGROUND MAPPING INFORMATION HAS BEEN REPRODUCED FROM THE ORDNANCE SURVEY BY PERMISSION OF ORDNANCE SURVEY OF THE CONTROLLER OF HIS MAJESTY'S STATIONERY OFFICE. © CROWN COPYRIGHT AND DATABASE RIGHTS (2025) LICENCE OS100024241 AND AC0000807948.

